



San Luis &
Delta-Mendota
WATER AUTHORITY

Science Program Update

July 2025

Science Program Priority Activities

1. Review and provide strategic, unifying direction for regulatory compliance documents
2. Integrate and collaborate with the scientific community
3. Build capacity for the Water Authority's Science Program
4. Provide guidance for science priorities and management questions

Science Program Priority #1

Review and provide strategic, unifying direction for regulatory compliance documents

- Long term Water Operations (State & Federal)
 - LTO ROD
 - ITP
- Protected Species Listings
 - Longfin smelt
 - White Sturgeon
- Water Transfer Environmental Compliance

Science Program Priority #2

Integrate and collaborate with the scientific community

- Delta Coordination Group and Adaptive Management Efforts
- National Academies of Science Review of the LTO
- Delta Science Program Grand Challenges

- Golden Mussel Task Force – State

Science Program Priority #2

Golden Mussel Task Force – State

- Science and Capacity Workgroup

SLDMWA Monitoring Plates

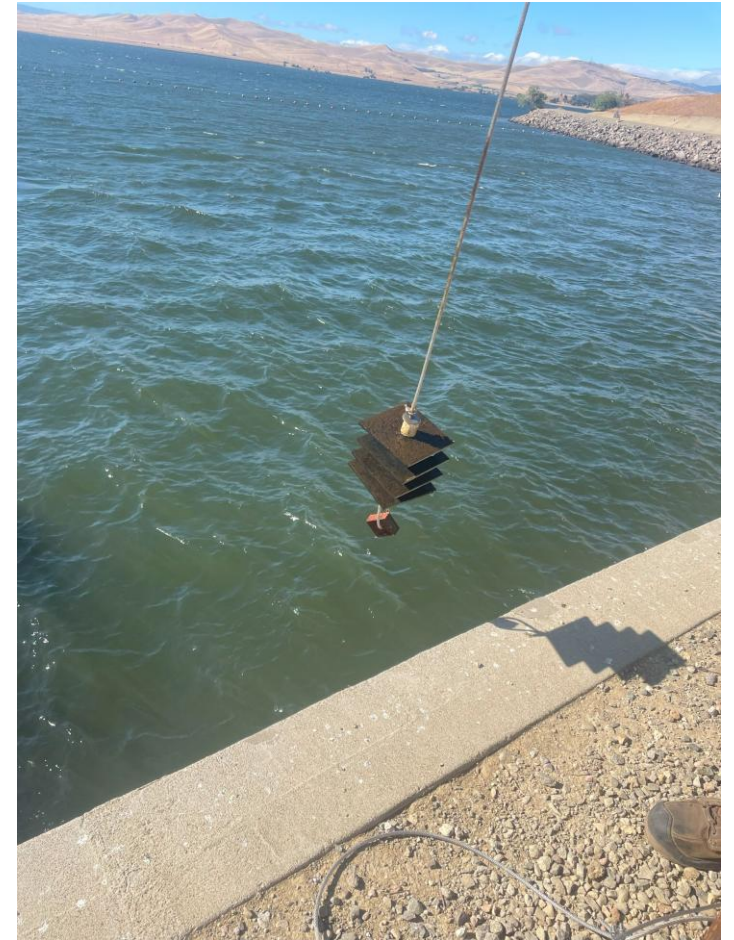
Coordination

- Valley Water
- Contra Costa
- Westlands
- East Bay MUD

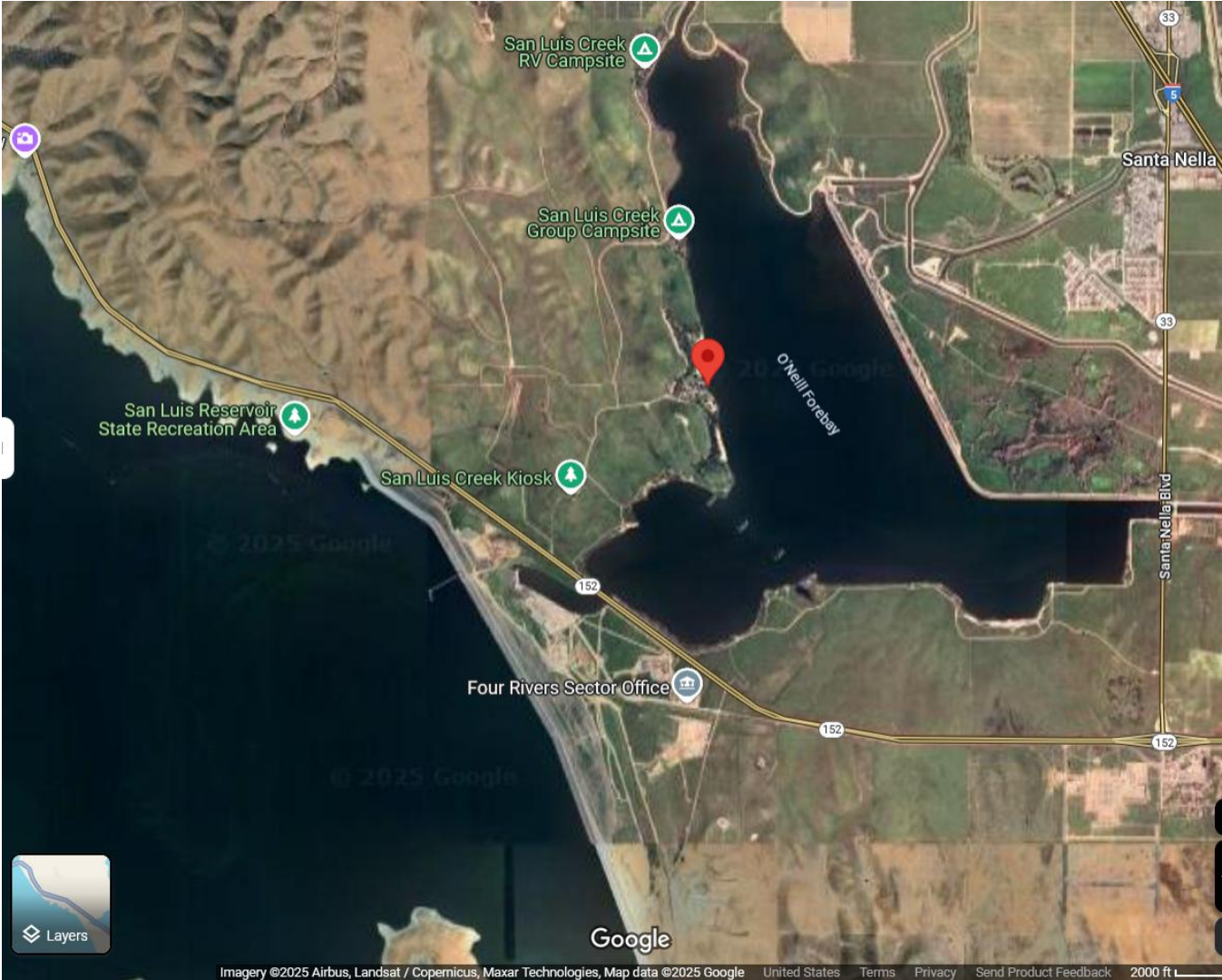


Photo Credit: USGS

Golden Mussels - Monitoring Plates



Golden Mussels

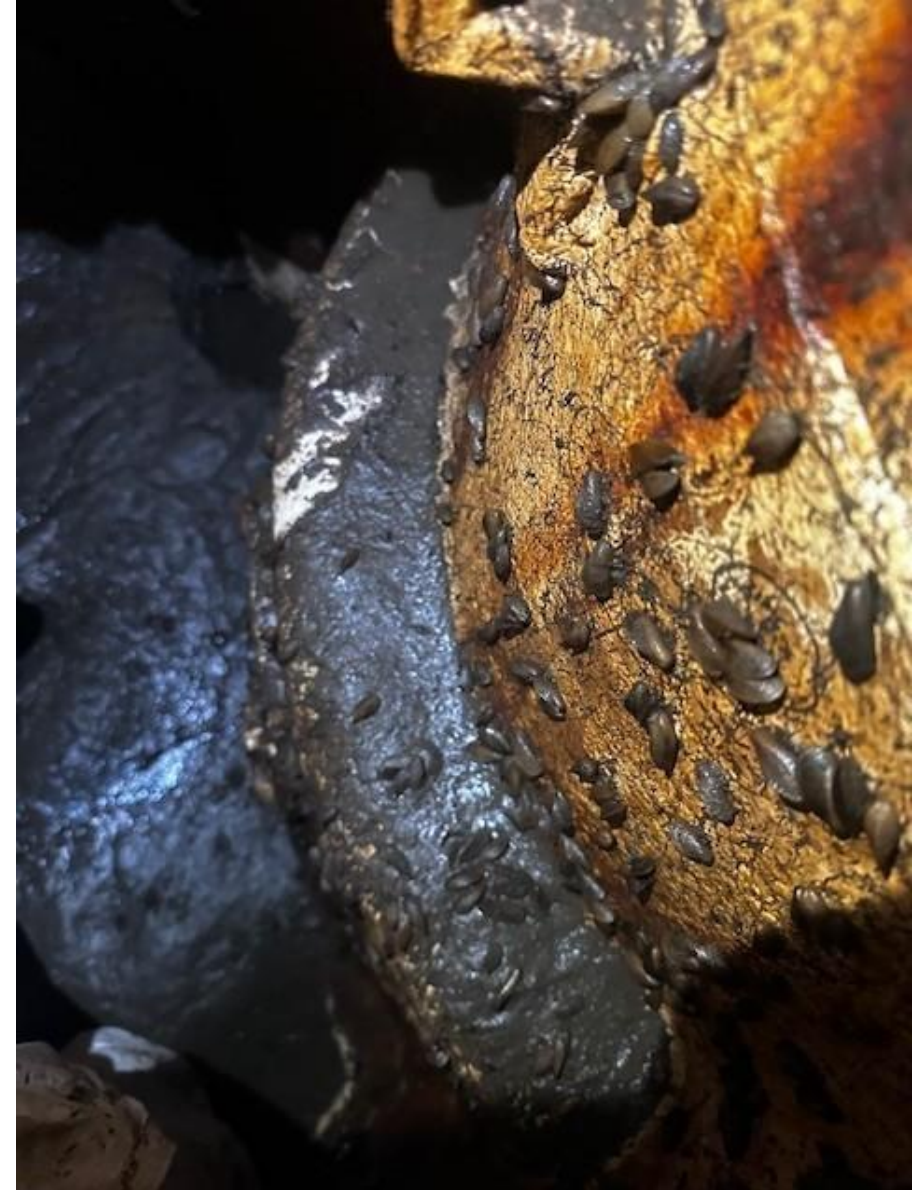


Golden Mussels

Detections at O'Neill Pumping Plant
inside the bowl pump bearing area

Preliminary studies suggest killing
Golden Mussels

- 135 deg water for 10 sec
- 145 deg water for 5 sec



Science Program Priority #3

Build capacity for the Water Authority's Science Program

Expanding UC Merced Projects

- Review and Summary of Controlling Water Regulations
- Decision Support Tool for Assessing Socio-Economic Impacts of Water Allocation

Scientific Consultant Support

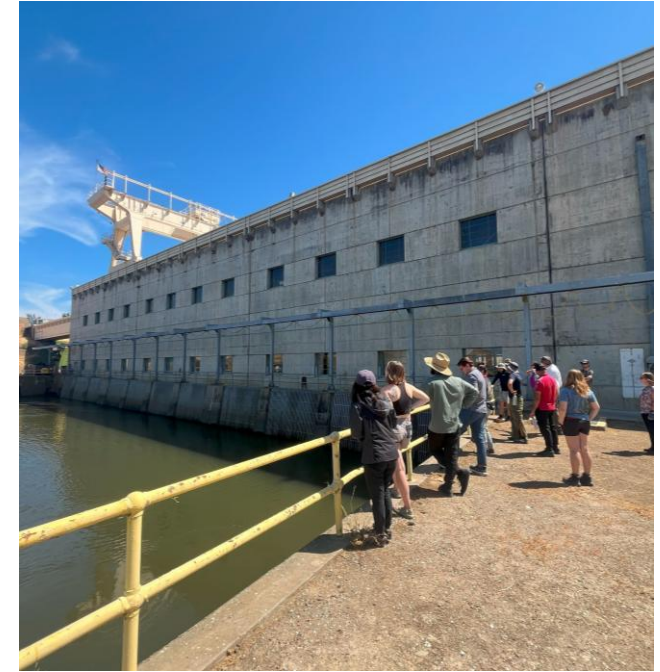
Science Program Priority #3

UC Water Academy Experiential Learning

- Tour August 1, 2024
- Tour August 14, 2025 (upcoming)

Finding Common Water

Super Soaker Water Academy



Science Program Priority #4

Provide guidance for science priorities and management questions

Science Coordination Workgroup

- Quarterly Meetings, or as necessary
- Development of Processes and Templates

Salmon Harvest Estimates Pilot Study

Contact:
Cindy Meyer, Ph.D.
Cindy.Meyer@SLDMWA.org

